

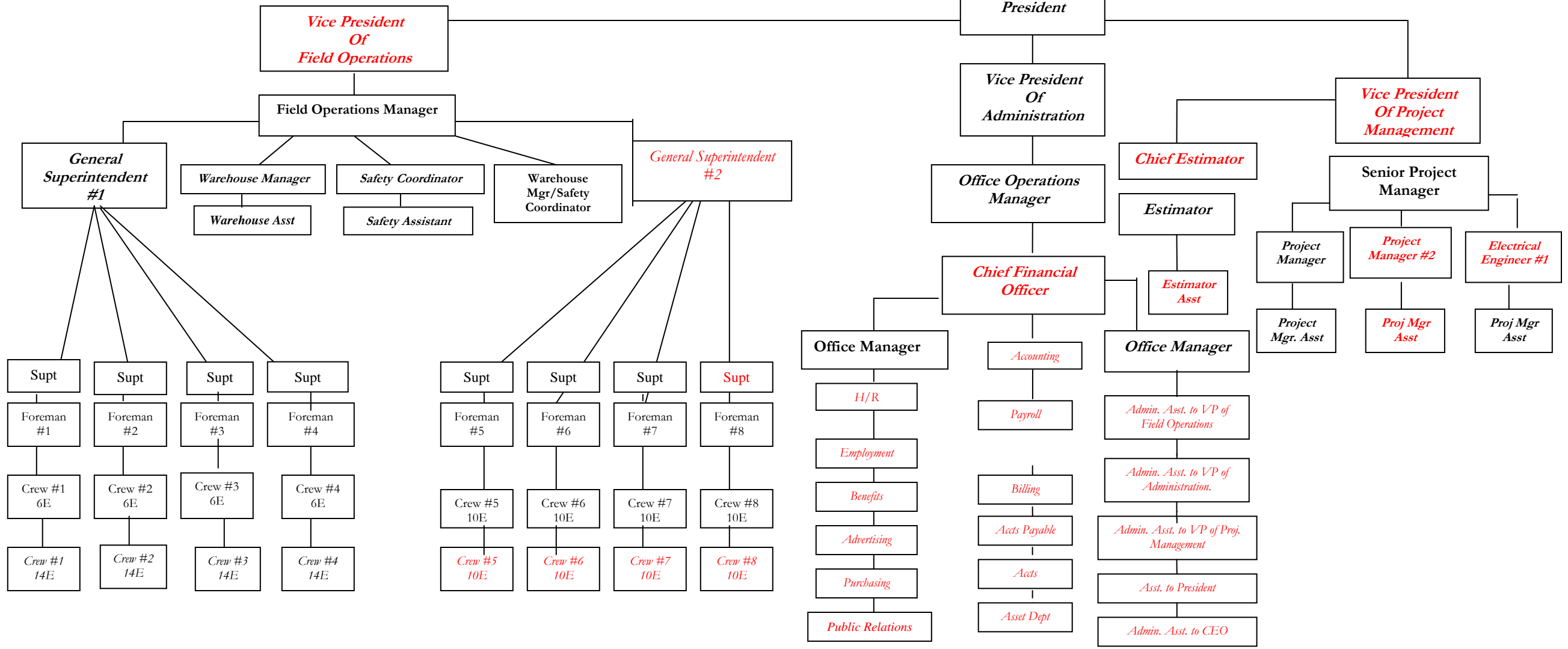
# Nixon's Electric, Inc. Company Structure

Red indicates Open Positions/ Future Expansion  
 Black indicates now or before January 2008  
 Each Crew will be Approximately starting with 6 to 20 men.  
 \*E stands for Electricians  
 \*Crew stands for Crew Leader

Headquarters location is in Birmingham, AL

Office located in Montgomery AL

The Red Chart Available Future Position Due to Expansion



*It is my vision to fill all positions when all the people are trained correctly.  
 The person who best fulfill the job description with the proper qualifications.*